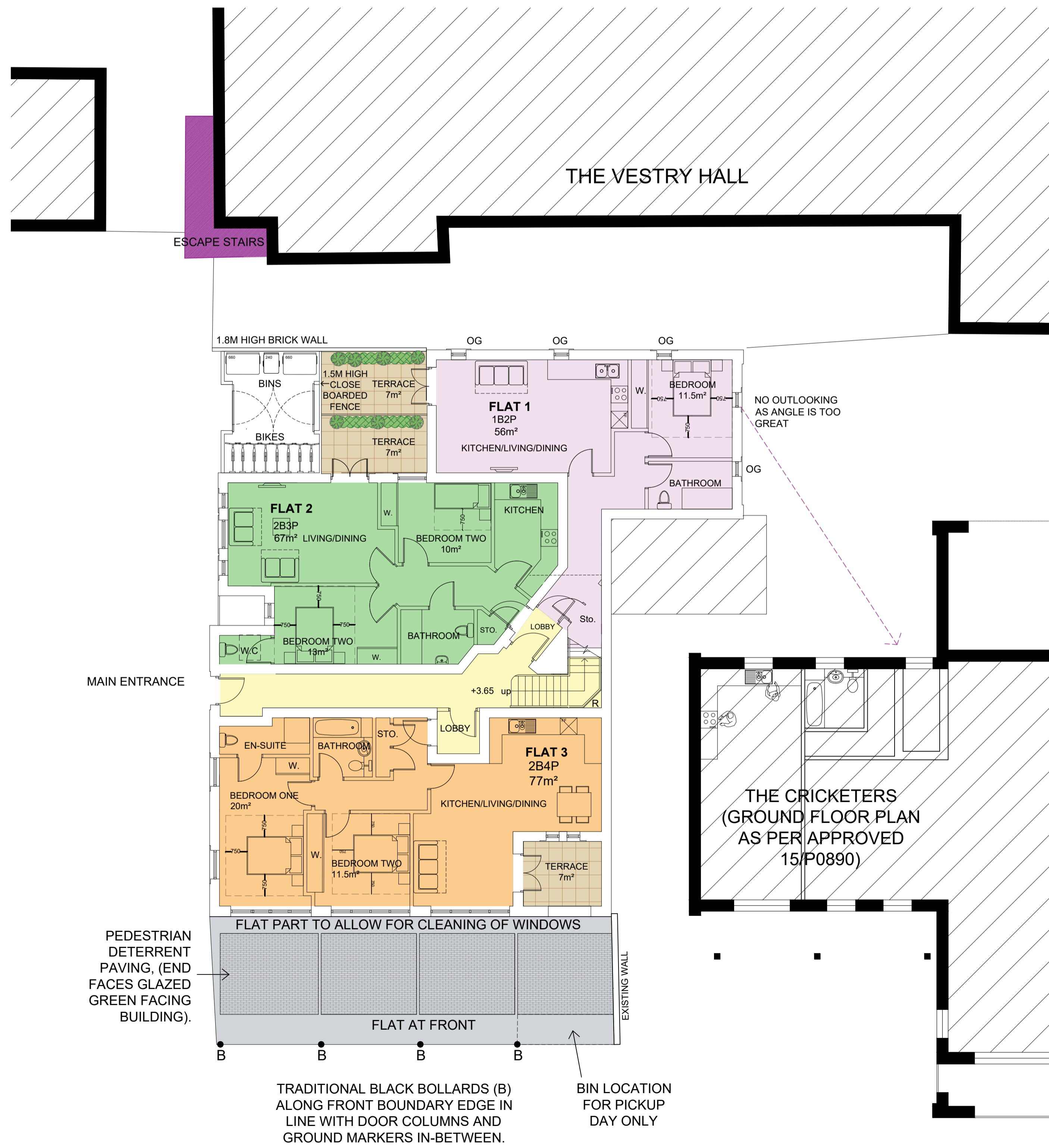
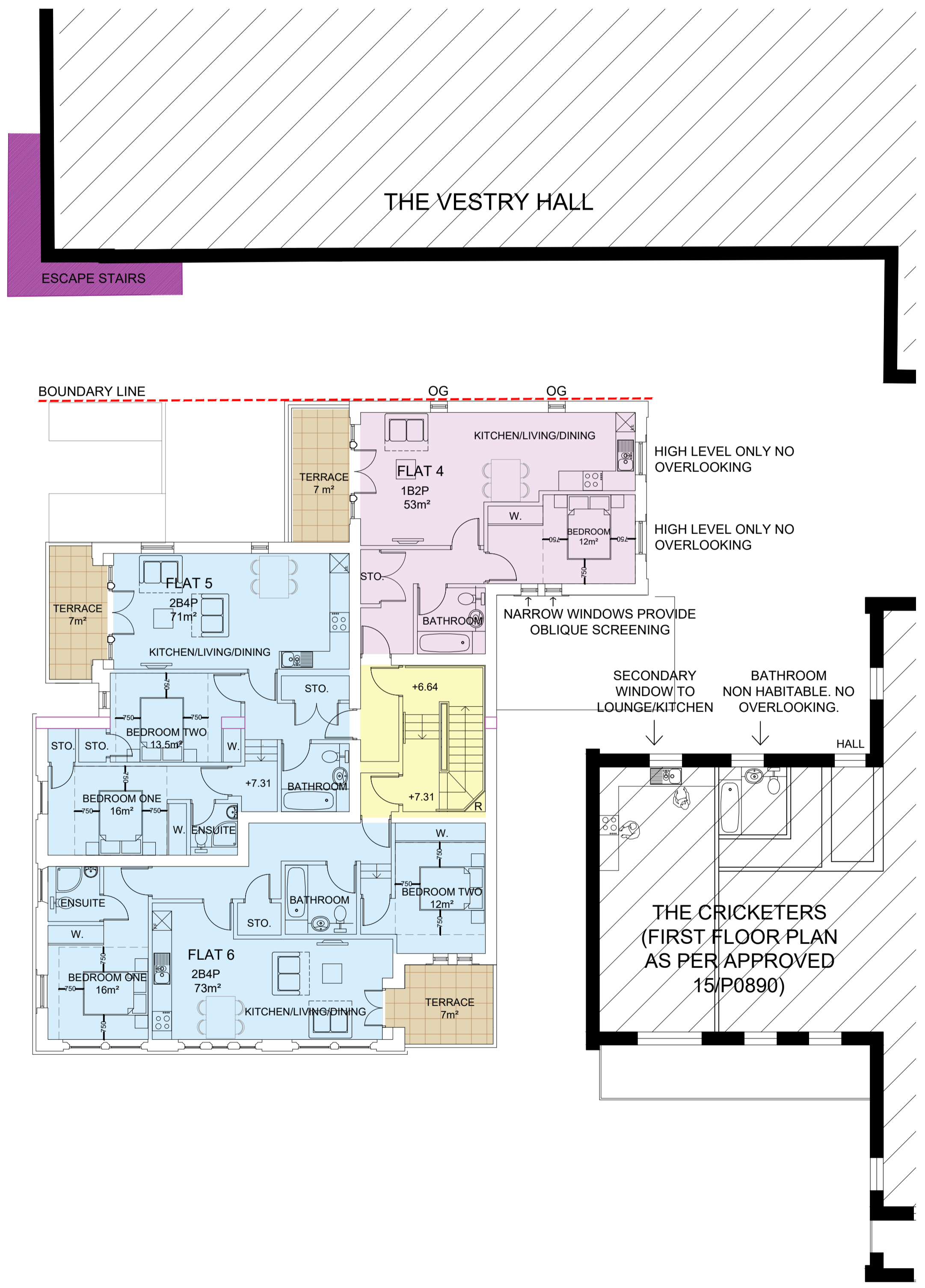


Accommodation Schedule		
Flat 1	1B2P	56m <sup>2</sup>
Flat 2	2B3P	67m <sup>2</sup>
Flat 3	2B4P	77m <sup>2</sup>
Flat 4	1B2P	53m <sup>2</sup>
Flat 5	2B4P	71m <sup>2</sup>
Flat 6	2B4P	73m <sup>2</sup>
Flat 7	1B2P	51m <sup>2</sup>
Flat 8	1B2P	54m <sup>2</sup>
Flat 9	1B2P	50m <sup>2</sup>

REVISIONS		DO NOT SCALE	
REV	DATE	NOTES	INITIAL
A	July	Revised planting to forecourt Added furniture and dimensions	KER
B	Oct	Bin and bike store relocated Railing across recess Accommodation schedule added	KER
C	10.11.20	First Floor revised to include larger private amenity to flat 5.	NG
D	Jan 2021	Revised private amenity for flats 1, 2 and 3, 5 and 6. Revised location for front door and window to flat 1.	KER
E	Feb 2021	Revised entrance to flat one via main entrance. Reduced size of flat two. Removed terrace to heritage of flat 3 and incorporated terrace within building envelope. Escape stairs added for Vestry Hall. Part internal layout added to the 'Cricketers'.	KER



Ground floor



First floor

Page 4/99

STATUS **Planning**

Notes

**Howard Fairbairn:MHK**  
chartered architects

Howard Fairbairn Project Services Ltd  
Lambourn House, Redlands  
Coulston  
Surrey  
CR5 2HT  
Telephone  
020 8665 5252  
Website  
hfmhk.com  
Email  
croydon@hfmhk.com

Client	Parkside Property
Project	Mitcham Fire Station 30 Lower Green West, Mitcham
Title	Proposed ground and first floor
Drawn by	KR
Checked by	
Scale	1:100 @ A1
Date	May 2021
CAD Ref:	6724

Dwg N° 6724-PL-303 Rev E

This page is intentionally left blank